

Hi valued employees,  
Please see below and attached for TFNSW.

A copy will be made available on our website for your information.

Many Thanks,



ABN: 73 600 809 925

Tracey Lougher  
Accounts Manager  
M: 0455 734 339

Please send all Remittances through to: [accounts@purerail.com.au](mailto:accounts@purerail.com.au)

---

Please check out this page for the changes to the network Rules and Procedures

### Rail Safe

Coordinated Worksites animated video

<https://railsafe.org.au/news/coordinated-worksites>

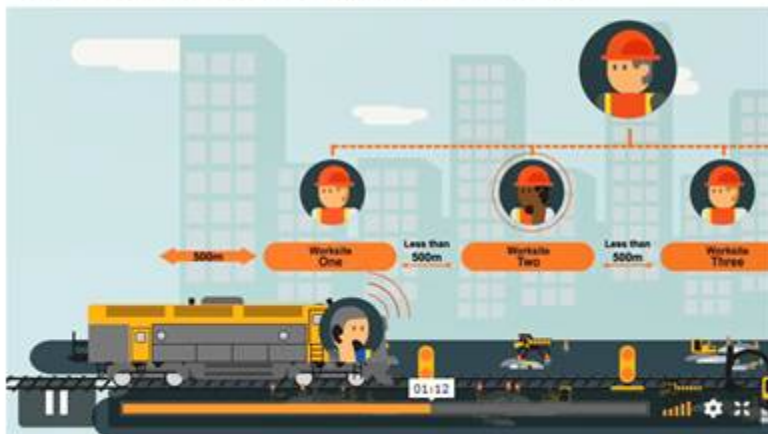
### Coordinated Worksites

The Network Rules Unit will be introducing Coordinated Worksites as part of the rule changes to Local Possession Authority in 2019.

Following the NRU information sessions held with stakeholders throughout all of September, NRU will be introducing Coordinated Worksites as part of the Network Rule changes effective on the 30th of September.

A revised SAFE Notice for Trial of Worksite Delineation Markers during a Local Possession Authority will be published to allow stakeholders to implement Coordinated Worksites.

This video has been provided to reinforce the implementation of Coordinated Worksites.



This video is best viewed in Chrome.

PDF GENERATED BY

# SAFE Notice *2019* 008

**Permanent**

## **TRIAL OF PROTECTION MARKERS IN A LOCAL POSSESSION AUTHORITY (LPA)**

From Wednesday, 12 June 2019 until Wednesday, 11 December 2019 this Permanent SAFE Notice cancels and replaces Permanent Safe Notice 017 – 2018 due to expiry.

## Using Protection Markers in a Local Possession Authority (LPA)

In exception to *NWT 302 Local Possession Authority* and *NPR 700 Using a Local Possession Authority*, Protection Markers may be used in place of red flags/lights that are placed to protect worksite limits or LPA limits.

Protection Markers include:

- Possession Limit Markers,
- Worksite Protection Markers.

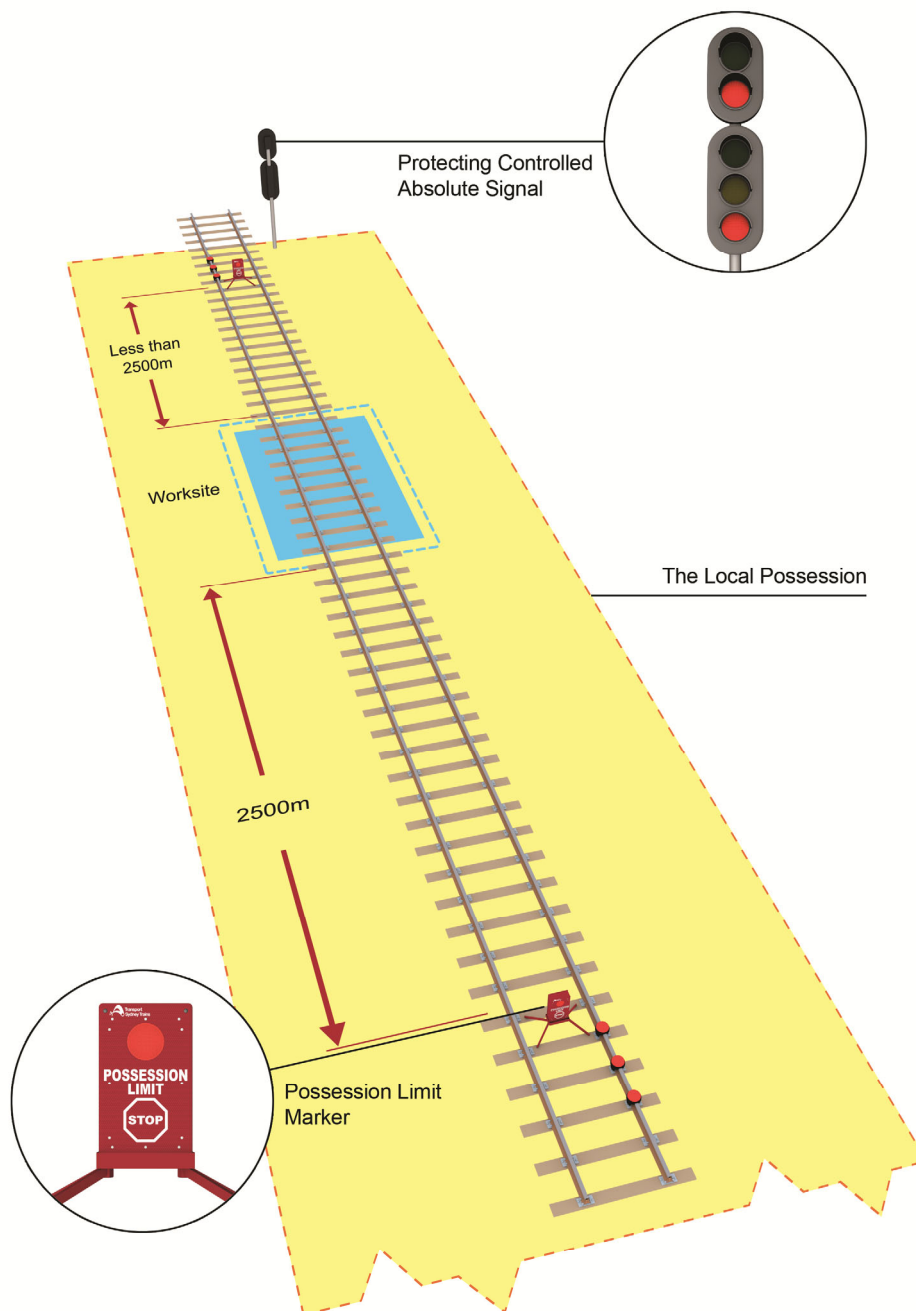
### Possession Limit Markers

Possession Limit Markers have a single red light inside a reflective red, rectangular chassis. Reflective white text showing 'Possession Limit' and a symbol indicating STOP is displayed on both sides of the marker.



**FIGURE 1:** Possession Limit Marker chassis

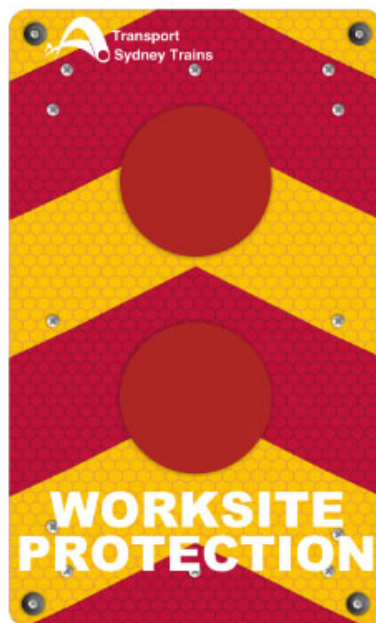
Possession Limit Markers must be placed in the 4 foot on a dedicated stand, where LPA limit protection is placed. The Possession Protection Officer's contact details must be placed on the Possession Limit Marker, facing entry into the LPA.



**FIGURE 2:** Protection Limit Markers placed at LPA limits or 2500m from a single worksite.

## Worksite Protection Markers

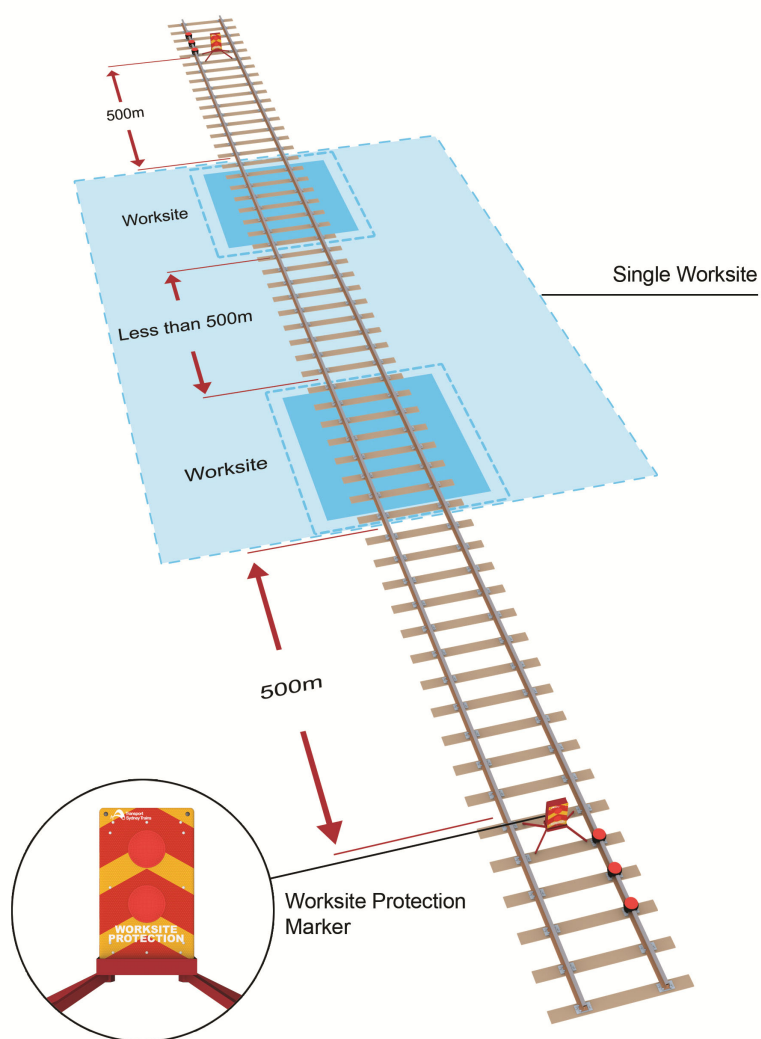
Worksite Protection Markers have a double red light inside a rectangular, reflective red/yellow, chevron patterned chassis. Reflective white text showing 'Worksite Protection' is displayed on both sides of the marker.



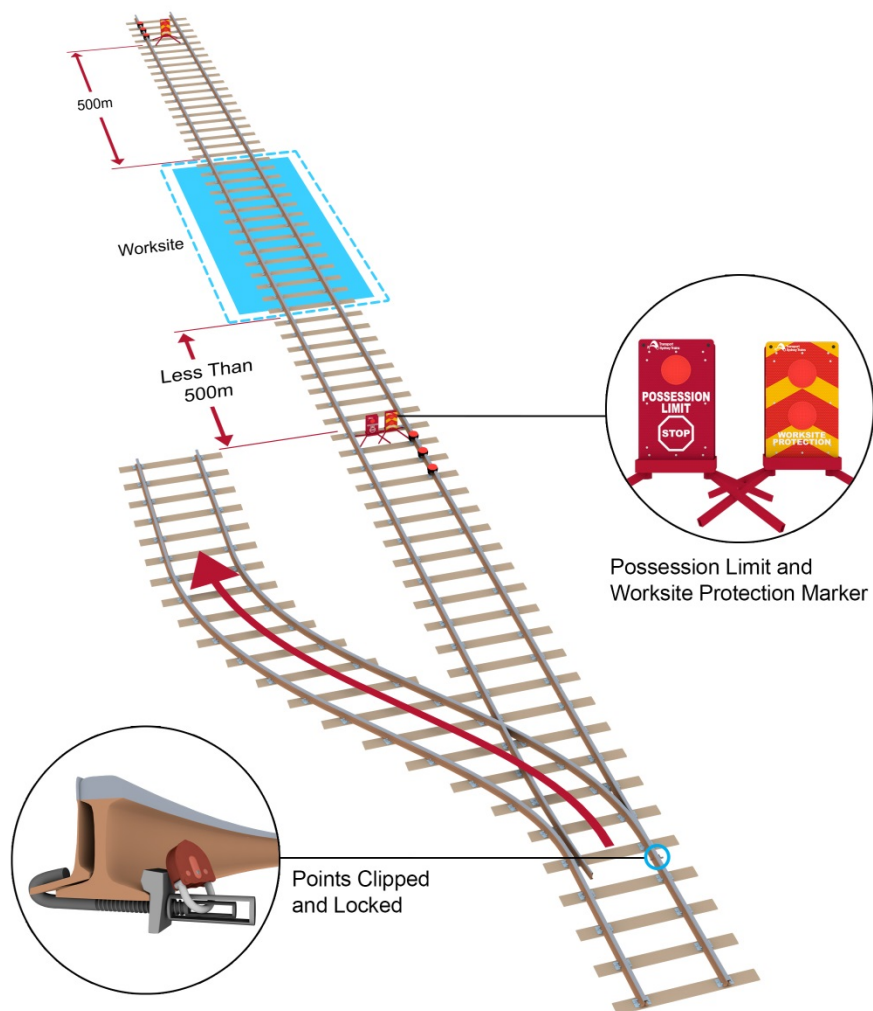
**FIGURE 3:** Worksite Protection Marker chassis

Worksite Protection Markers must be placed in the 4 foot on a dedicated stand, where worksite protection is placed. If a worksite is established less than 500m from an LPA limit in accordance with *NWT 302 Local Possession Authority*, Worksite Protection Markers must be placed next to Possession Limit Markers.

The Protection Officer must place their contact details on the Worksite Protection Marker, facing entry into the worksite.



**FIGURE 4:** Worksite Protection Markers placed 500m from the worksite limits.



**FIGURE 5:** Worksite Protection Marker placed next to a Possession Limit Marker for a worksite less than 500m from LPA limits.

**SYDNEY, 30 MAY 2019**

**DIRECTOR SAFETY AND STANDARDS SYDNEY TRAINS**

Returned to Controlling Manager: Date: ..... Signed: .....



-----  
*(Cut along this line and forward the detached receipt to your Controlling Manager)*

To Controlling Manager:.....

Received SAFE Notice No. 008 – 2019      Date: .....      Signed: .....

Name (print): .....      Location: .....

*(Controlling Manager to retain this Acknowledgement of Receipt of the TOM Notice for record purposes for 90 days)*





# SAFE Notice 2019 004

## Permanent

### **PROTECTING WORKSITES LESS THAN 500 METRES APART IN A LOCAL POSSESSION AUTHORITY (LPA)**

From Thursday, 21 March 2019 until Friday, 20 September 2019, this Permanent Safe Notice cancels and replaces Permanent Safe Notice 014 – 2018 due to expiry.

## Protecting worksites less than 500 metres apart in a Local Possession Authority (LPA)

In exception to *NWT 302 Local Possession Authority* and *NPR 700 Using a Local Possession Authority*, a Coordinated Worksite may be established if worksites are less than 500 metres apart and cannot be effectively managed as a single worksite by a Protection Officer.

Coordinated Worksites must have:

- a nominated Coordinating Protection Officer to manage the Coordinated Worksite, and
- approved Worksite Delineation Markers placed midway between worksites, and
- Railway Track Signal protection placed 500 metres from the outermost worksites.

Railway Track Signal protection between the worksites will not be required in a Coordinated Worksite

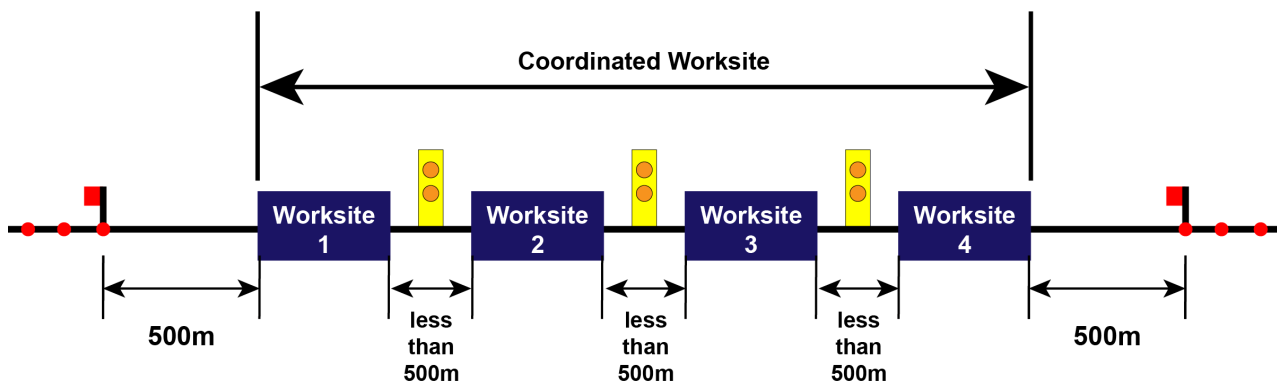


Figure 1 Example of worksites less 500 metres apart established as a Coordinated Worksite in an LPA

If practicable, the establishment of a Coordinated Worksite must be planned and the details recorded in permanent form.

If a Coordinated Worksite cannot be established as planned, or protection arrangements have changed, the Coordinating Protection Officer and Possession Protection Officer must confer to:

- establish new protection arrangements for the Coordinated Worksite, or
- make sure worksites are protected in accordance to *NWT 302 Local Possession Authority* and *NPR 700 Using Local Possession Authority*

The Coordinating Protection Officer must comply with the Possession Protection Officer's instructions and be able to safely and effectively manage the protection arrangements of the Coordinated Worksite.

## Worksites in the Coordinated Worksite

Where worksites are planned to be less than 500 metres apart:

- Each worksite must have a Protection Officer that is able to safely and effectively manage the worksite protection arrangements.
- Each Protection Officer must comply with the Coordinating Protection Officer's instructions
- An approved Worksite Delineation Marker must be placed midway between worksites

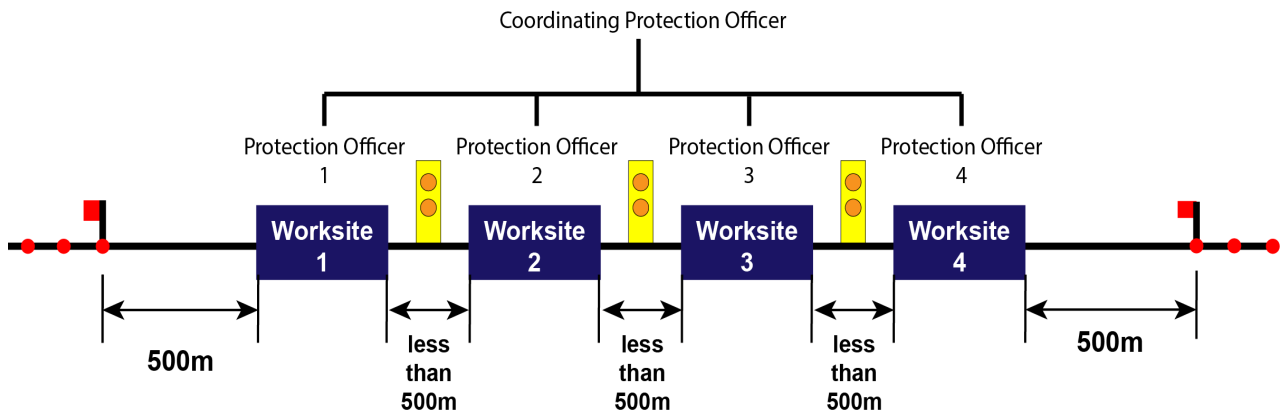


Figure 2 Example of roles in a Coordinated Worksites

When a Protection Officer tells the Coordinating Protection Officer that work is complete, the Coordinating Protection Officer must confer with the Possession Protection Officer about the changes, and as required arrange for:

- the removal or replacement of Worksite Delineation Markers
- the replacement of Railway Track Signal protection at 500 metres from the outermost worksites
- worksites to be protected in accordance to *NWT 302 Local Possession Authority* and *NPR 700 Using Local Possession Authority*

## Approved Worksite Delineation Markers

An approved Worksite Delineation Marker must be placed midway between worksites in a Coordinated Worksite either attached to the rail or on a dedicated stand in the "4 foot".

Protection Officers must place their contact details on the approved Worksite Delineation Markers facing entry into the worksite.



Figure 3 Approved Worksite Delineation Markers

## Rail traffic movements

The Coordinating Protection Officer is responsible for managing rail traffic movements into and within the limits of a Coordinated Worksite.

**SYDNEY, 7 MARCH 2019**

**DIRECTOR SAFETY AND STANDARDS SYDNEY TRAINS**

Returned to Controlling Manager:    Date: .....    Signed: .....



-----  
*(Cut along this line and forward the detached receipt to your Controlling Manager)*

To Controlling Manager: .....

Received SAFE Notice No. 004 – 2019    Date: .....    Signed: .....

Name (print): .....    Location: .....

*(Controlling Manager to retain this Acknowledgment of Receipt of the SAFE Notice for record purposes for 90 days.)*



# SAFE Notice 2019 004

## Permanent

### **PROTECTING WORKSITES LESS THAN 500 METRES APART IN A LOCAL POSSESSION AUTHORITY (LPA)**

From Thursday, 21 March 2019 until Friday, 20 September 2019, this Permanent Safe Notice cancels and replaces Permanent Safe Notice 014 – 2018 due to expiry.

## Protecting worksites less than 500 metres apart in a Local Possession Authority (LPA)

In exception to *NWT 302 Local Possession Authority* and *NPR 700 Using a Local Possession Authority*, a Coordinated Worksite may be established if worksites are less than 500 metres apart and cannot be effectively managed as a single worksite by a Protection Officer.

Coordinated Worksites must have:

- a nominated Coordinating Protection Officer to manage the Coordinated Worksite, and
- approved Worksite Delineation Markers placed midway between worksites, and
- Railway Track Signal protection placed 500 metres from the outermost worksites.

Railway Track Signal protection between the worksites will not be required in a Coordinated Worksite

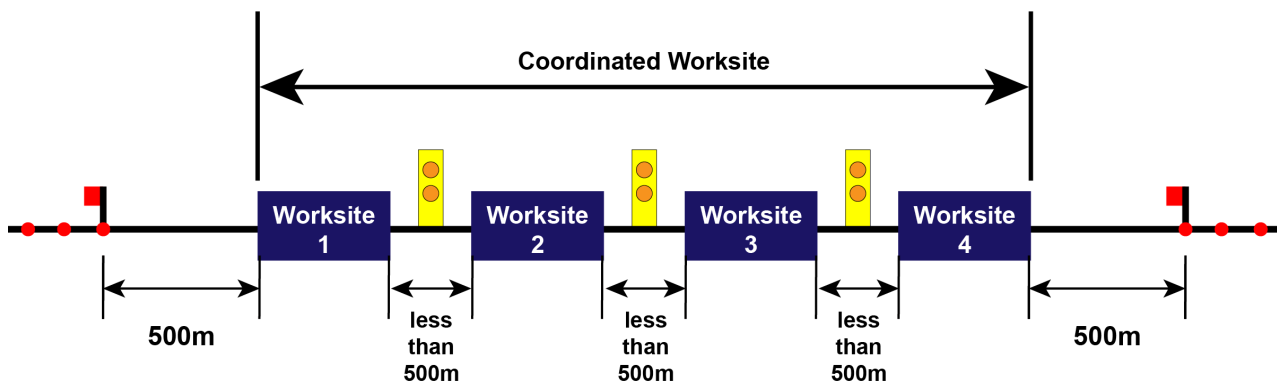


Figure 1 Example of worksites less 500 metres apart established as a Coordinated Worksite in an LPA

If practicable, the establishment of a Coordinated Worksite must be planned and the details recorded in permanent form.

If a Coordinated Worksite cannot be established as planned, or protection arrangements have changed, the Coordinating Protection Officer and Possession Protection Officer must confer to:

- establish new protection arrangements for the Coordinated Worksite, or
- make sure worksites are protected in accordance to *NWT 302 Local Possession Authority* and *NPR 700 Using Local Possession Authority*

The Coordinating Protection Officer must comply with the Possession Protection Officer's instructions and be able to safely and effectively manage the protection arrangements of the Coordinated Worksite.



## Worksites in the Coordinated Worksite

Where worksites are planned to be less than 500 metres apart:

- Each worksite must have a Protection Officer that is able to safely and effectively manage the worksite protection arrangements.
- Each Protection Officer must comply with the Coordinating Protection Officer's instructions
- An approved Worksite Delineation Marker must be placed midway between worksites

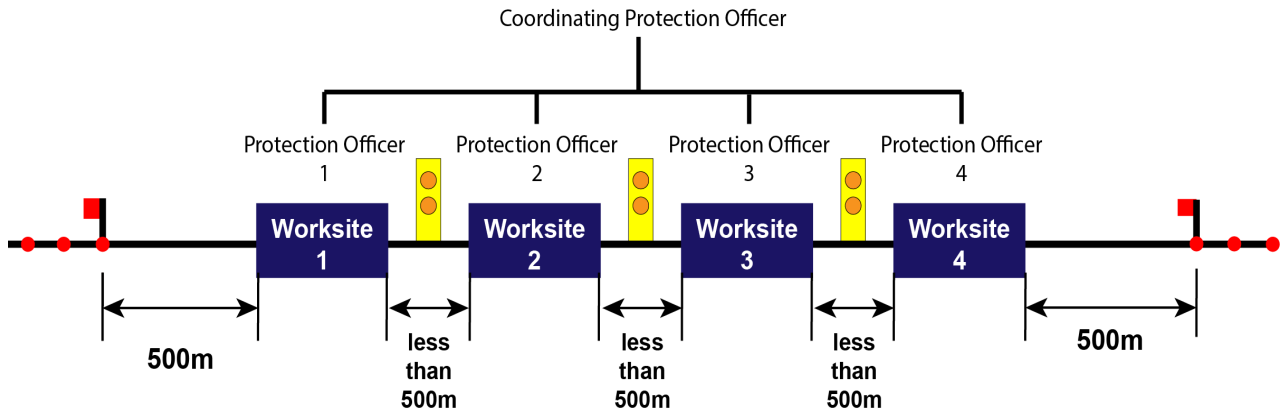


Figure 2 Example of roles in a Coordinated Worksites

When a Protection Officer tells the Coordinating Protection Officer that work is complete, the Coordinating Protection Officer must confer with the Possession Protection Officer about the changes, and as required arrange for:

- the removal or replacement of Worksite Delineation Markers
- the replacement of Railway Track Signal protection at 500 metres from the outermost worksites
- worksites to be protected in accordance to *NWT 302 Local Possession Authority* and *NPR 700 Using Local Possession Authority*

## Approved Worksite Delineation Markers

An approved Worksite Delineation Marker must be placed midway between worksites in a Coordinated Worksite either attached to the rail or on a dedicated stand in the "4 foot".

Protection Officers must place their contact details on the approved Worksite Delineation Markers facing entry into the worksite.



Figure 3 Approved Worksite Delineation Markers

## Rail traffic movements

The Coordinating Protection Officer is responsible for managing rail traffic movements into and within the limits of a Coordinated Worksite.

**SYDNEY, 7 MARCH 2019**

**DIRECTOR SAFETY AND STANDARDS SYDNEY TRAINS**

Returned to Controlling Manager:    Date: .....    Signed: .....



*(Cut along this line and forward the detached receipt to your Controlling Manager)*

To Controlling Manager: .....

Received SAFE Notice No. 004 – 2019    Date: .....    Signed: .....

Name (print): .....    Location: .....

*(Controlling Manager to retain this Acknowledgment of Receipt of the SAFE Notice for record purposes for 90 days.)*