

---

Another trial on LPA /Worksite protection-FYI...

Pay particular note to 'working within 500mtrs to the LPA limit'- both the Possession Limit and Worksite Protection lights are required side-by-side.

In exception to NWT 302 Local Possession Authority and NPR 700 Using a Local Possession Authority, Protection Markers may be used in place of red flags/lights that are placed to protect worksite limits or LPA limits.

Protection Markers include:

- \* Possession Limit Markers,
- \* Worksite Protection Markers.

# SAFE Notice *2018* 017

**Permanent**

## **TRIAL OF PROTECTION MARKERS IN A LOCAL POSSESSION AUTHORITY (LPA)**

From Friday, 14 December 2018 until Wednesday, 13 June 2018 this Permanent SAFE Notice applies in addition to the requirements of NWT 302 Local Possession Authority and NPR 700 Using Local Possession Authority.

## Using Protection Markers in a Local Possession Authority (LPA)

In exception to *NWT 302 Local Possession Authority* and *NPR 700 Using a Local Possession Authority*, Protection Markers may be used in place of red flags/lights that are placed to protect worksite limits or LPA limits.

Protection Markers include:

- Possession Limit Markers,
- Worksite Protection Markers.

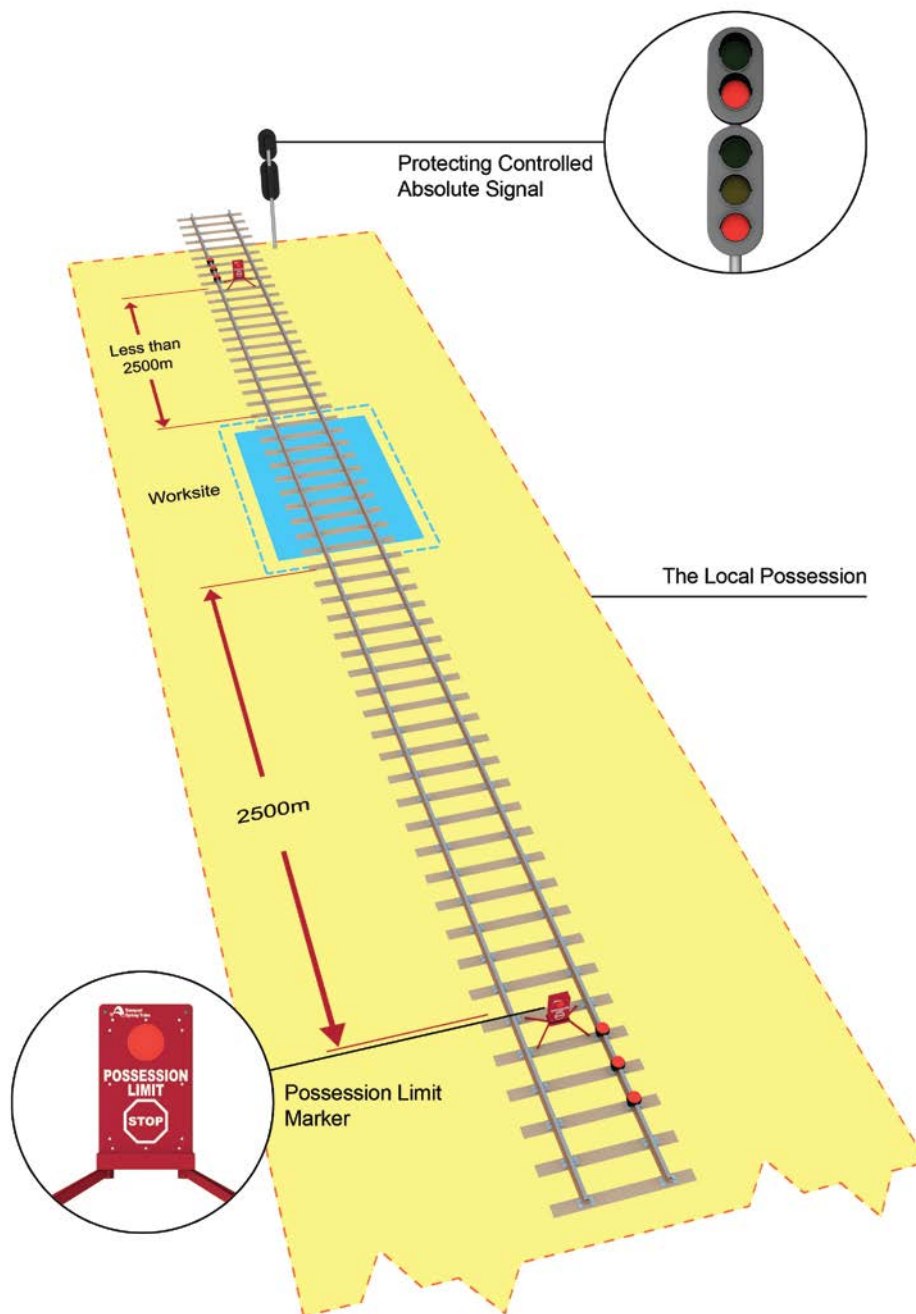
### Possession Limit Markers

Possession Limit Markers have a single red light inside a reflective red, rectangular chassis. Reflective white text showing 'Possession Limit' and a symbol indicating STOP is displayed on both sides of the marker.



**FIGURE 1:** Possession Limit Marker chassis

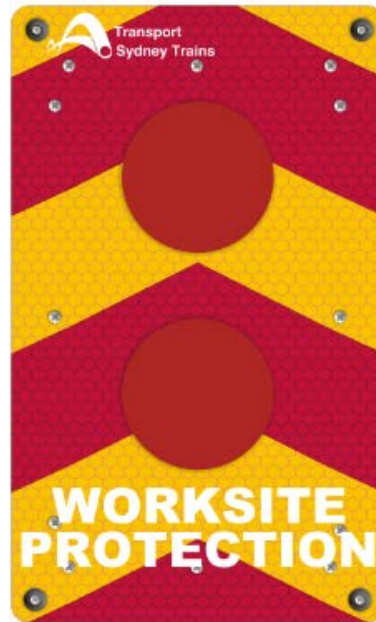
Possession Limit Markers must be placed in the 4 foot on a dedicated stand, where LPA limit protection is placed. The Possession Protection Officer's contact details must be placed on the Possession Limit Marker, facing entry into the LPA.



**FIGURE 2:** Protection Limit Markers placed at LPA limits or 2500m from a single worksite.

## Worksite Protection Markers

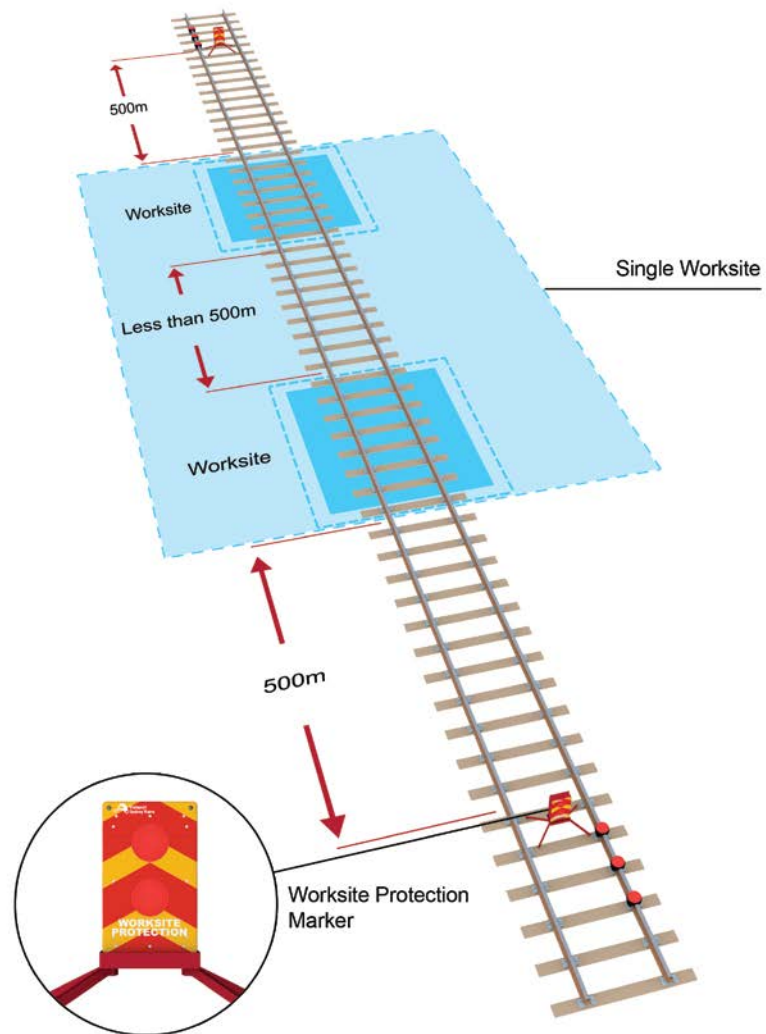
Worksite Protection Markers have a double red light inside a rectangular, reflective red/yellow, chevron patterned chassis. Reflective white text showing 'Worksite Protection' is displayed on both sides of the marker.



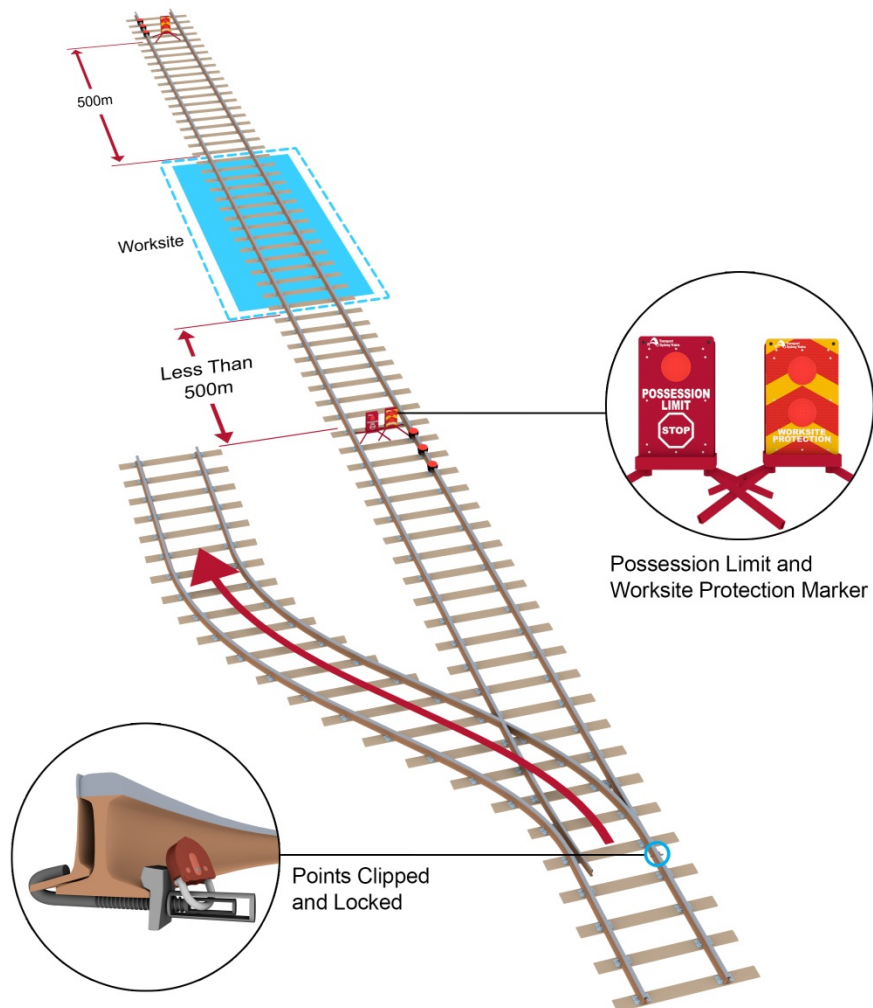
**FIGURE 3:** Worksite Protection Marker chassis

Worksite Protection Markers must be placed in the 4 foot on a dedicated stand, where worksite protection is placed. If a worksite is established less than 500m from an LPA limit in accordance with *NWT 302 Local Possession Authority*, Worksite Protection Markers must be placed next to Possession Limit Markers.

The Protection Officer must place their contact details on the Worksite Protection Marker, facing entry into the worksite.



**FIGURE 4:** Worksite Protection Markers placed 500m from the worksite limits.



**FIGURE 5:** Worksite Protection Marker placed next to a Possession Limit Marker for a worksite less than 500m from LPA limits.

**SYDNEY, 29 NOVEMBER 2018**

**DIRECTOR SAFETY AND STANDARDS SYDNEY TRAINS**

Returned to Controlling Manager: Date: ..... Signed: .....



-----  
*(Cut along this line and forward the detached receipt to your Controlling Manager)*

To Controlling Manager:.....

Received SAFE Notice No. 017 – 2018 Date:..... Signed: .....

Name (print): ..... Location: .....

*(Controlling Manager to retain this Acknowledgement of Receipt of the TOM Notice for record purposes for 90 days)*